



VYM

—

View Your Mind

Version 1.12.0

©Uwe Drechsel

June 23, 2008

Contents

1	Introduction	6
1.1	What is a VYM map?	6
1.2	Why should I use <i>maps</i> ? Time, Space and your Brain.	6
1.3	Where could I use a <i>map</i> ?	7
1.4	What you shouldn't do with a <i>map</i>	8
1.5	Internet Ressources	8
2	The Concept of the VYM application	8
2.1	The Mainwindow and its satellites	8
2.2	Menus and Context menus	9
2.3	Toolbars	9
2.4	Maps	10
3	Mapeditor	10
3.1	Start a new map	10
3.2	Navigate through a map	11
3.3	Modify and move branches	12
3.4	Colours and Images - Using the right side of your brain	13
3.5	Design of map background and connecting links	15
3.6	Links to other documents and webpages	16
3.7	Multiple maps	17
4	Noteeditor	17
4.1	States	17
4.2	Import and export notes	18
4.3	Edit and print note	18
4.4	RichText: Colours, paragraphs and formatted text	18
4.5	Fonts and how to switch them quickly	18
4.6	Find text	19
4.7	Paste text into note editor	19
5	Hello world	19
5.1	Import	19
5.2	Export	20

6	Advanced Editing	22
6.1	Properties of an object	22
6.2	Changing the history: Undo and Redo	23
6.3	Macros	24
6.4	Bookmarks	24
6.5	Associating images with a branch	25
6.6	Modifier Modes	25
6.7	Hide links of unselected objects	26
6.8	XLinks	26
6.9	Adding and removing branches	27
6.10	Adding a whole map or a part of a map	27
7	VYM on Mac OS X	27
7.1	Overview	27
7.2	Contextmenu and special keys	28
7.3	Viewing external links	28
A	VYM initialisation process and configuration	29
A.1	Settings menu	29
A.2	Configuration file	30
A.3	Path to ressources	30
A.4	Command line options	30
B	Scripts	31
B.1	Example scripts	31
B.1.1	Export a set of maps	31
C	Contributing to VYM	31
C.1	Getting help	31
C.2	How to report bugs	32
C.3	Compiling from the sources	32
C.3.1	Getting the sources	32
C.3.2	The Qt toolkit	33
C.3.3	Compiling VYM	33
C.4	VYM file format	33
C.5	New features	33
C.6	New languages support	34

C.7 New export/import filters	34
---	----

Credits

Many people have sent me their feedback and ideas, and all of that has helped a lot to make VYM better. Thanks to all of you!

For this manual I would like to send some special thanks to

- *Peter Adamson* for lots of feedback and proofreading of my far from perfect english
- The team of *AClibre (Academia y Conocimiento Libre)* in Colombia for their translation of the manual to spanish:

Encargado	Actividad
<ul style="list-style-type: none">– Vanessa Carolina Gutiérrez Sanchez– Erika Tatiana Luque Melo– Jeffrey Steve Borbón Sanabria– John Edison Ortiz Román	<ul style="list-style-type: none">– Traducciónl– Revisión y correcciones varias– Estructuración y exporte– Revisión y correcciones varias

1 Introduction

1.1 What is a VYM map?

A VYM map (abbreviated below as *map*) is a tree-like structure:



Such maps can be drawn by hand on a sheet of paper or flip chart and help to structure your thoughts. While a tree like structure like the illustration above can be drawn manually VYM offers much more features to work with such maps. VYM is not just another drawing software application, but a tool to store and modify information in an intuitive way. For example you can reorder parts of the map by pressing a key or add various pieces of information like a complete email by a simple mouse click.

Once you have finished collecting and organising your ideas, you can easily generate a variety of outputs including for example a presentation in Open Office based on a *map*.

Hint: You find the map shown above and others by clicking

Help → Open vym examples

in the menu bar.

!

1.2 Why should I use *maps*? Time, Space and your Brain.

Space

A *map* can concentrate very complex content in a small space such as a piece of paper. It helps to use both sides of your brain: the logical side and also your creative side (e.g. by using pictures, colours and keywords in a map, often called *anchors*). It is a technique to help organize the way you think and stimulate your creativity: It can help you by developing, sorting and helping to memorise your ideas.

Time

Because you just use keywords and drawings, it is much faster than good old fashioned 'notes'. Your brain memorizes things by associating them with other things – a *map* makes use of those connections and stimulates new associations.

Your Brain

In 1960 Prof. ROGER SPERRY discovered that both hemispheres of the human brain undertake different tasks (of course both of them basically *can* do the same):

Left side	Right side
<ul style="list-style-type: none">• verbal speech and writing• numbers• logical thinking• analysing and details• science• linear thinking• concept of time	<ul style="list-style-type: none">• body language• visual thinking, day dreams• intuition and emotion• overview of things• creativity• art, music, dancing• non-linear thinking, connecting things• spatial awareness

In our science oriented western society we have learned to mainly rely on our left side of the brain, the "rational" one. In other cultures, such as the native americans and other "old" cultures, the right side is much more important. *Map* are just one way to stimulate the other side and make use of additional resources we all have.

1.3 Where could I use a *map*?

Here are some examples, how you can use those *maps*

- to prepare articles, papers, books, talks, ...
- to sort complex data
- to memorize facts, peoples names, vocabulary, ...
- to sort emails, files and bookmarks on your computer
- to moderate conferences
- to brainstorm solutions to problems
- to record the tasks when planning a project

1.4 What you shouldn't do with a *map*...

A *map* drawn by somebody shows the way that the author thinks. There is no question of right or wrong in the way it is drawn, so there is no way to criticise it. "It is, what it is" (F. LEHMANN). The tool will be of considerable use to the author and only very limited use to anyone else.

However, when groups share in creating a *map* all of the group will benefit from its use. An example of such use is when a Tutor develops a *map* with a group of students during instruction. Another group use is when a Project leader gathers a group of specialists to help *map* the tasks that will be required to deliver a project.

1.5 Internet Ressources

A good starting point to learn more about Mindmaps in general is Wikipedia:

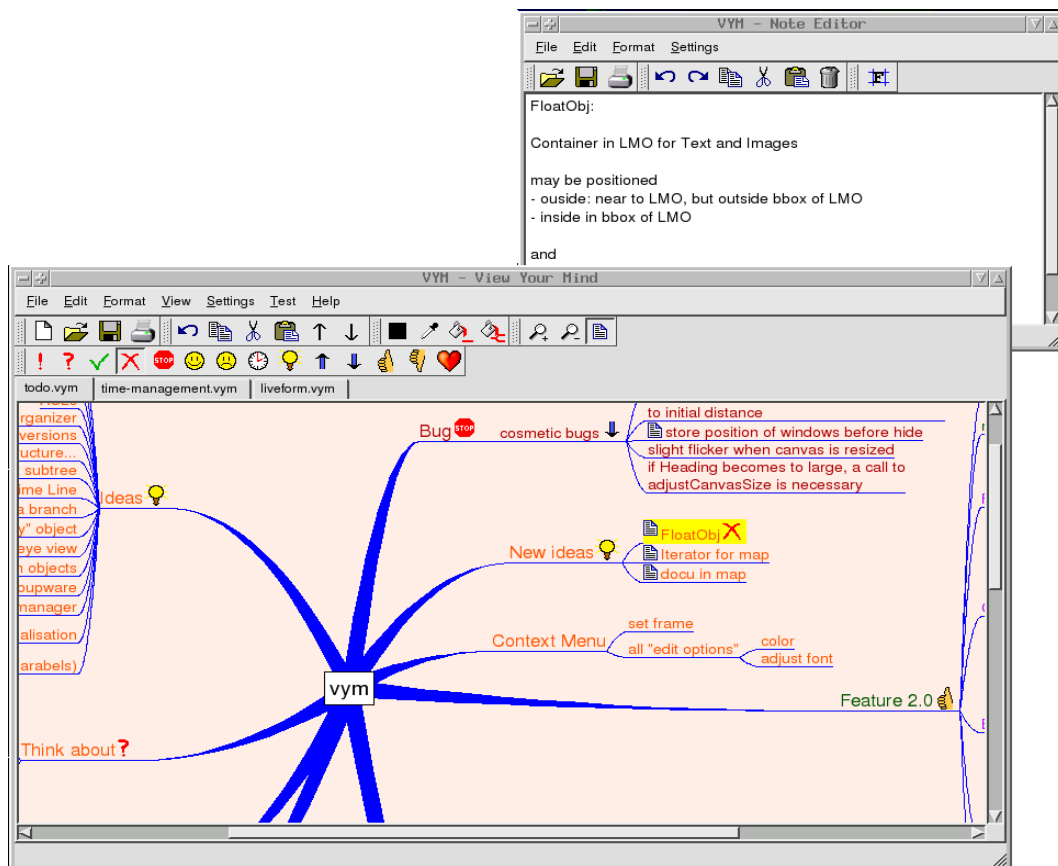
- English: http://en.wikipedia.org/wiki/Mind_map
- German: <http://de.wikipedia.org/wiki/Mindmap>

2 The Concept of the VYM application

2.1 The Mainwindow and its satellites

VYM comes with several windows, the central one being the *mapeditor*. More windows, each having a special purpose, can be opened and arranged around the mainwindow¹. The image below shows the *mapeditor* together with the often used *noteeditor*:

¹ The advantage of having separate window instead of integrating them in a combined workspace is flexibility in arranging the windows. For example I usually have the *noteeditor* "behind" the *mapeditor*. On Linux my windowmanager (KDE) allows me to enter text into a small visible corner of the *noteeditor* without clicking the mouse button in it. I just push the mouse around to set the window focus, a concept which is useful also working with <http://www.gimp.org>.



Most of the time you will work in the *mapeditor* by just adding new branches, moving around and reordering them. The various ways to do this will be explained in [3](#). You can store additional information e.g. the content of a email easily in a *branch*: Just type or copy&paste it into the *noteeditor*. Working with notes is explained in [4](#)

Here is a list of the available satellite windows:

- Noteeditor (see [4](#))
- Historywindow (see [6.2](#))
- Branch Property Window (see [6.1](#))

2.2 Menus and Context menus

At the top of each window you will find the menubar. The options provided there are similar to those you are probably used to from other applications. Note that many (and even more) options are available via *context menus*. Those are available if you right-click onto an object in a map (on Mac OS X Command-Click).

2.3 Toolbars

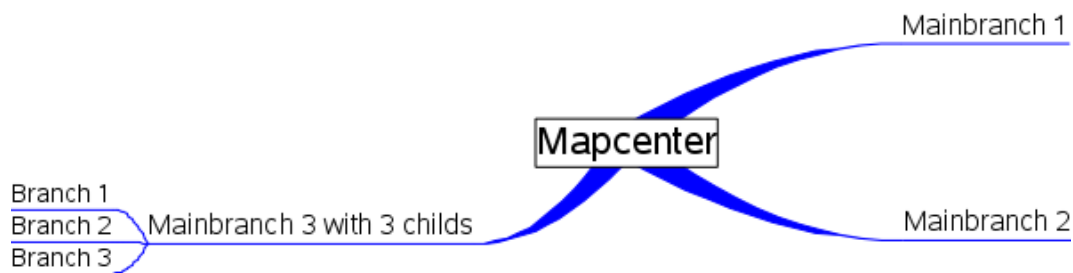
The toolbars in the mainwindows give quick access to many functions and also display the state of selected objects in the map. For example a branch may show certain *flags*, the corresponding flags are also set in the toolbar.

Hint: You can reposition all toolbars by simply grabbing and dragging them with the toolbar handle to a new position. For example you can move the flags-toolbar from its original horizontal position on top of the mapeditor to a vertical position on the right side. Or just insert it again at its original position. Also hiding some of the toolbars is possible by right-clicking on the toolbar handle.

!

2.4 Maps

The *map* itself has always a *mapcenter*. The mapcenter has *branches* radiating out from the centre just like the trunk of a tree. Each branch in turn may have branches again.



We will call a branch directly connected to the mapcenter a *mainbranch*, because it determines the position of all its child branches.

The mapcenter and the branches all have a *heading*. This is the text you see in the mapeditor. Usually it should just be one or a few key words, so that one can easily keep track of the whole map.

In the toolbar above the mapeditor you see various symbols.



These are called *flags* and can be used to mark branches in the *map*, e.g. if something is important or questionable. There are also more flags set by VYM automatically to show additional information, e.g. when a note is attached to a particular branch.

By default some of these flags are set exclusively e.g. when the "thumb-up" flag is set, then the "thumb down" is reset and vice versa. You can change this default behaviour in the settings menu (see ??).

3 Mapeditor

3.1 Start a new map

After VYM is started two windows will open: the *mapeditor* and the *noteditor*. Usually you will work in both windows, but at the moment we will just need the mapeditor.

Select the mapcenter "New map" in the middle of the mapeditor by left-clicking with the mouse. It will be highlighted yellow to show that is selected. There are several ways to add a new branch to the center:

- Using the mouse: Open the context menu by clicking with the right mouse button (CTRL-Click on Mac) onto the mapcenter and choose Add → Add branch as child

- Press [Ins] or [A]

A new branch will appear and you will be able to type the heading of the branch. Finish adding the new branch by pressing [Enter]. Sometimes it comes in handy to be able to add a new branch above or below the current one.

- Use [Shift-A] to add a branch above the selected one or...
- [Ctrl-A] to add one below.

It is also possible to add a branch in such a way, that the current selection becomes the child of the new branch, which is like inserting it *before* the selection. This can be done using the context menu.

<p>Hint: To delete a branch press [CTRL-X]. If enabled in the Settings menu (see ??), you can also use the [Del] key.</p>
--

!

3.2 Navigate through a map

Select branches

To select branches you can use the left button of your mouse or also the arrow keys. Depending on the *orientation* of a branch tap [←] or [→] to move nearer to the mapcenter or deeper down into the branches. Within a set of branches, let's call them a *subtree*, you can use [PgUp] and [PgDn] to go up and down. You can also use [Home] and [End] to select the first and last branch.

Panning the view of a map

While adding more and more branches the size of the map may become larger than the mapeditor window. You can use the scrollbars on the right and the bottom of your mapeditor window to scroll the view up or down or left or right. It is easier to just scroll using the left mouse button: Click anywhere on the *canvas* itself. Choose an empty space somewhere between the branches. The mouse pointer will change from an arrow to a hand, now move or drag the visible map to show the desired part.

If you select branches using the arrow keys, the map will scroll to ensure that the selected branch is always visible.

Zooming the view of a map

Working with huge maps, the *zoom*-function comes in handy: You can use

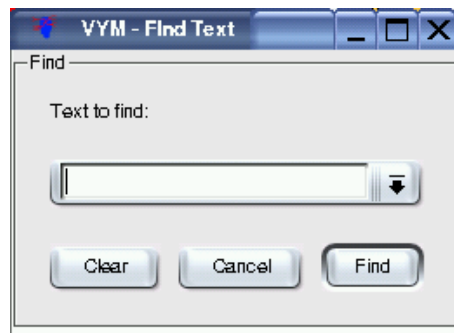
- from the menu: View →Zoom in, View →Zoom out, View →reset Zoom.
- the toolbar buttons



Clicking the crossed magnifying lens icon will reset the zoomed view to its original size.

Find Function

With huge maps there is the need to have a find function. Choose Edit → Find to open the Find Window:



The find function will search for, the text you enter here, in all the branch headings and also in the associated notes. Everytime you press the "Find"-button it will look for the next occurrence, which will then be selected automatically. If the search fails, a short message "Nothing found" will appear for a few seconds in the *statusbar* on the bottom of the mapeditor.

Keep the overview – scroll a part of the map

A very big subtree of a map e.g. a branch with hundreds of child branches would make it very hard to keep an overview over the whole map. You can hide all the children of a branch by *scrolling* it – this function is often called *folding*. Think of the whole subtree as painted onto a broadsheet newspaper. You can scroll or fold the paper to a small roll, leaving just the headline visible.

To scroll or unscroll a branch and its children,

- press either the [Scroll Lock] key or the [S]
- press the middle-mouse button or
- choose the scroll icon from the toolbar.

If you select parts of a scrolled branch e.g. using the find function or by using the arrow-keys, it will unscroll temporary. This is shown as a scroll with a little hour glass. If the temporary unscrolled part is no longer needed, it will be hidden again automatically. It is also possible to unscroll all branches using "Edit→Unscroll all scrolled branches".

You can also hide parts of the map while exporting it e.g. to a webpage or a presentation, see [5.2](#) for details.

3.3 Modify and move branches

Modify the heading

You can edit the heading by selecting the branch and then

- pressing [Enter]

- pressing [F2]
- double-clicking with left mouse.

Just type the new heading (or edit the old one) and press [Enter].

Move a branch

The easiest way to move a branch is to select it with left-mouse and drag it to the destination while keeping the mouse button pressed. Depending on the branch it will be

- moved to the destination or
- *linked* to a new *parent* (mapcenter or branch)

If you drag the branch over another one or over the mapcenter, you will notice that the link connecting it to the old parent will be changed to lead to the new parent which is now under your mousepointer. If you release the button now, the branch will be relinked.

If you release the button in the middle of nowhere, the result will depend on the type of branch you are releasing:

- A mainbranch is directly connected to the mapcenter. It will stay on its new position.
- An ordinary branch will "jump" back to its original position.

Thus you can easily rearrange the layout of the mainbranches to avoid overlapping of their subtrees. There is another convenient way to move branches, especially if you want to *reorder* a subtree: You can move a branch up or down in a subtree by

- pressing [↑] and [↓]
- selecting Edit → Move branch
- clicking on the toolbar buttons:



There is yet another way to move branches: If you press [Shift] or [Ctrl] while moving with the mouse, the branch will be added above or below the one the mouse pointer is over. This can also be used to reorder branches in a map.

3.4 Colours and Images - Using the right side of your brain

Change colour of a heading

You can also use colours to add more information to a map, e.g. use red, green and more colours to prioritize tasks. Again you can

- use the menu and choose e.g Format → Set Color

- use the toolbar



The first button (black in the graphic above) shows the current colour. Clicking on it let's you choose another colour. You can also "pick" another colour by selecting a branch with the desired colour and using the "pick colour" button. Both of the icons showing a palette actually apply the current colour to the selected branch. While the first one just colours the heading of the selection, the last one also colours all the children of the selected branch.

A very useful function is the "copy colour" using the mouse: Select the branch which should get the new colour, then press [Ctrl] and simultaneously click with left-mouse on another branch to copy its colour to the first one. Here the children of the selection also will get the new colour, if you just want to colour the selection itself, additionally press [Shift].

Use flags

VYM provides various flags. They are usually displayed in the toolbar on top of the mapeditor window. (Note: Like all toolbars you can also move them to the left or the right side of the window or even detach them. Just grab the very left "dotted" part of the toolbar with your left-mouse button.)



If you have a branch selected, you can set any number of flags by clicking them in the toolbar. The toolbar buttons change their state and always reflect the flags set in the selected branch. So, to remove a flag from a branch, select the branch and then click the highlighted flag on the toolbar.

At present VYM uses two kinds of flags: *System Flags* and *Standard Flags*. The standard flags are those shown in the toolbar. System flags are set by VYM to indicate e.g. that there is additional information in a note (more on this in [4](#)). Later versions of VYM may have another kind of flags, which may be edited by the user.

Images

The easiest way to add an image to a branch is by dragging it e.g. from a webbrowser to the mapeditor while a branch is selected there.

You can also add an image to a branch by opening the context menu of the branch. Right click the selected branch, choose "Add Image". A dialog window enables you choose the image to load. ² While an image is selected in the dialog, a preview of the image is displayed. It is also possible to select multiple images.

You can position the image anywhere you want, just drag it with left mouse. To relink it to another branch, press [Shift] while moving it. To delete it, press [Del].

If you right-click onto an image, a context menu will open which let's you first choose one of several image formats. Then a file dialog opens to save the image.

²Supported image types are: PNG, BMP, XBM, XPM and PNM. It may also support JPEG, MNG and GIF, if specially configured during compilation (as done when VYM is part of SUSE LINUX).

Hint: This is used to "export" the image, it will be saved anyway in the map itself! You can also cut and copy images, but it is not possible to add objects to an image³

The option '**Use for export**' controls the output of exports e.g. to HTML: If set to no, the image won't appear in the *text* part of the output. This is useful for large images or if images are used as a kind of frame e.g. the famous cloud symbol around a part of the map. Those shouldn't appear in the middle of the text.

At the moment image support is preliminary: Images will be saved together with all the other data of a map in the `.vym`-file. Later versions will include more functionality like resizing the images, changing its z-value (put it into background) etc.

Frames

A frame can be added to a branch in the *property window* (see 6.1). Alternatively, you can use images as frames. Have a look at the demo map `todo.vym` as an example, where the mapcenter is a cloud. You can use an external drawing program like `gimp` to create an image, preferable with an transparency channel, so that you can design frames which don't use a rectangular borderline, just like that cloud.

3.5 Design of map background and connecting links

The design of the background of a map and also of the links connecting various parts of the map can be changed by

- Selecting Format from the menu
- Right clicking on the canvas, which will open a context menu

Background

The colour is set (and also displayed) as "Set background colour". Alternately you can set an background image, though this is not recommended in general. Working on the map becomes slow and the image currently cannot be positioned freely.

Link colour

Links connecting branches can be coloured in one of two ways:

- use the same colour for the heading and for the branch link line.
- use *one* colour for all links and choose different colours for the branch headings text. The default colour for branch link lines is blue.

The latter can be set with "Set link colour". Check or uncheck the "Use colour of heading for link" option to toggle between the two designs for your map.

³ Images are regarded as "extra feature". It would make working with the map much more complex if e.g. images could be linked to images.

Link style

VYM offers four different styles for the appearances of links:

- Line
- Parabel
- Thick Line
- Thick Parabel

The "thick" styles only apply to links starting at the mapcenter, link lines for the rest of the map are always painted "thin".

3.6 Links to other documents and webpages

VYM supports two kind of external links:

- Document, which will be opened in an external webbrowser
- VYM map, which will be opened in VYM itself

In addition to the external links there also internal ones, leading from one branch in a map to another one. Those are called *XLinks* and are explained in section [6.8](#).

Webbrowser

Modern Webrowsers like **konqueror** and **Firefox** are able to display various types of files, both local or on the internet. To enter the URL of any document, press [U] or right-click onto a branch to open the contextmenu then choose "References→Edit URL". If you want to use a file dialog to conveniently choose a local file you can use [U].

After an URL was entered, a little globe will appear in the branch. By clicking on the globe in the toolbar or the context menu an external browser⁴ will be launched.



For more information on working with bookmarks and webrowsers see section [6.4](#).

In the context menu there is also an option to open all URLs found in the selected subtree of the map. That's useful to simultaneously open a collection of URLs in the webbrowser, especially if the browser can open them in tabs (like Konqueror).

VYM map

To link to to another map right click on a branch and choose "Edit VYM link". A file dialog opens where you can choose the map. A branch with a link is marked with



⁴ The browser can be changed in the Settings Menu (see ??).

Clicking this flag beside the branch heading, in the toolbar or in the context menu of a branch will open the map in another tab (see 3.7 for working with multiple maps). To delete an existing link, just right click the branch and select "Delete VYM link".

In the context menu there is also an option to open all vymlinks found in the selected subtree of the map. That's useful to simultaneously open a collection of related maps.

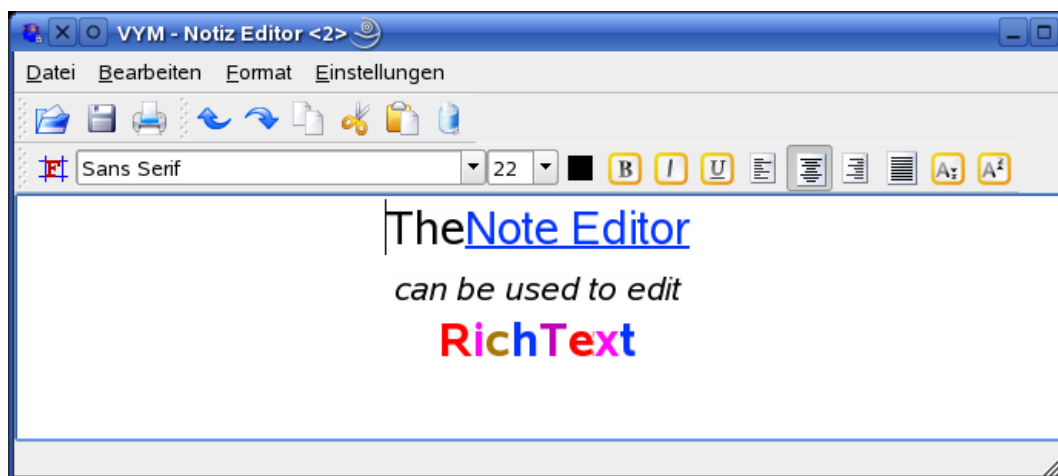
Technical note: Internally VYM uses absolute paths, to avoid opening several tabs containing the same map. When a map is saved, this path is converted to a relative one (e.g. `/home/user/vym.map` might become `./vym.map`). This makes it fairly easy to use multiple maps on different computers or export them to HTML in future.

3.7 Multiple maps

You can work on multiple maps at the same time. Each new map is opened in another *tab*. The available tabs are shown just above the mapeditor. You can use the normal cut/copy/paste functions to copy data from one map to another.

4 Noteeditor

If you want to attach more text to a branch e.g. a complete email, a cooking recipe, or the whole source code of a software project, you can use the noteeditor.



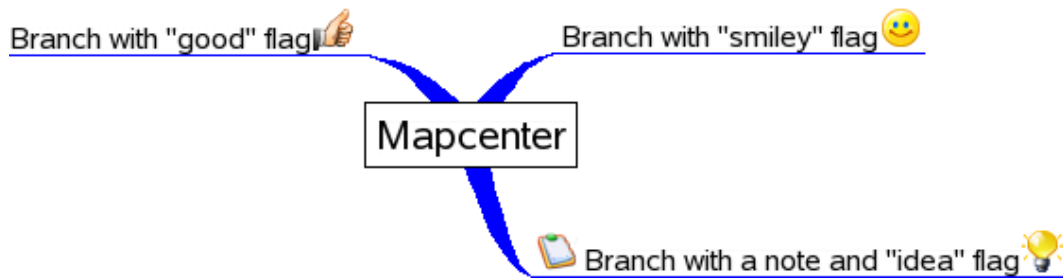
This editor displays text associated with a branch selected in the mapeditor. The noteeditor shows different background colours depending on whether text is associated with a selected branch.

4.1 States

Before you can type or paste text into it, you have to select a branch in the mapeditor. Note that the background colour of the noteeditor indicates its state:

- grey: no text entered yet
- white: some text has been entered

In the mapeditor itself, to signal that there is a note with more information for a particular branch, a little "note" flag will appear next to the heading of the branch. This is illustrated in the lower branch on the right hand side:



4.2 Import and export notes

The note is always saved automatically within the VYM map itself. Nevertheless sometimes it is nice to import a note from an external file or write it. In the Note Editor use "File→ Import" and "File→ Export" to do so.

4.3 Edit and print note

Editing works like in any simple texteditor, including undo and redo functions. You can delete the complete note by clicking the trashcan. Only the note itself is printed by clicking the printer icon.

4.4 RichText: Colours, paragraphs and formatted text

VYM supports formatted text (QT Rich Text) in the noteeditor since version 1.4.7. Colours and text attributes (e.g. italic, bold) can be set with the buttons above the text. The text itself is divided into paragraphs. For each paragraph the format can be set (e.g. centered, right). A paragraph is ended when a [Return] is entered. If you just want to begin a new line, press [CTRL-Return].

4.5 Fonts and how to switch them quickly

The noteeditor is designed to be used for simple notes, not really as a full featured word processor. Because of many requests VYM supports formatted text in the noteeditor⁵. Two default fonts are supported which can be set in the Settings menu (see ??). One is a fixed width font, the other has variable width. The fixed font is usually used for emails, source code etc. while the variable font is used for simple notes, where one doesn't need fixed character widths. Both fonts can easily switched using the following symbol from the toolbar:



In the Settings menu both fonts can be set. The default font can also be toggled between the fixed and variable font by selecting or deselecting the "fixed font is default" menu item.

⁵ VYM uses the QRichText format, which is basically a subset of the formatting provided in HTML.

Additionally to the default fonts any font installed on your system can be used. Please note, that the chosen font also will be used for HTML exports, so if you VYM mind map could ever be exported to a web or intranet page you should only use fonts which are available generally.

4.6 Find text

The noteditor itself has no Find function, use Find in the mapeditor, which will also search all notes (see [3.2](#)).

4.7 Paste text into note editor

Often you will paste text into the editor from another application e.g. an email. Normally VYM will generate a new paragraph for each new line. This usually is not what you want, so you can choose from the menu

5 Hello world

This section is about how VYM can interact with other applications. Many applications can now read and write their data using XML, the eXtensible Markup Language. VYM also uses XML to save its maps, see [C.4](#) for a more detailed description.

So if you make use of another application that understands XML, chances are good that someone could write import/export filters for VYM . Volunteers are always welcome ;-)

5.1 Import

KDE Bookmarks

The integrated bookmark editor in KDE (Konqueror etc.) is somewhat limited, so why not use VYM to maintain the bookmark mess? To create a new map containing your current KDE bookmarks just choose

- File → Import → KDE Bookmarks

Mind Manager

VYM has currently a very basic import filter to convert maps created by *Mind Manager*⁶ into VYM maps. Notes and pictures are not converted at the moment. You can import files with

- File → Import → Mind Manager

⁶Mind Manager is a commercial i.e. non free, software application by Mindjet for Windows and the Mac. Both names are registered trademarks by Mindjet. For more information see their website at <http://mindjet.com>

Directory structure

VYM can read a directory structure. This is mainly for testing VYM e.g. to easily create huge maps used for benchmarks (yes, there is still room to optimize VYM ;-)

5.2 Export

Often you may not want to export the whole map, but just parts of it. For example you may have additional info you want to talk about in a presentation, while those parts should not be visible to the audience. To achieve this you can "hide" parts of the map during exports by setting the "hide in export" flag.



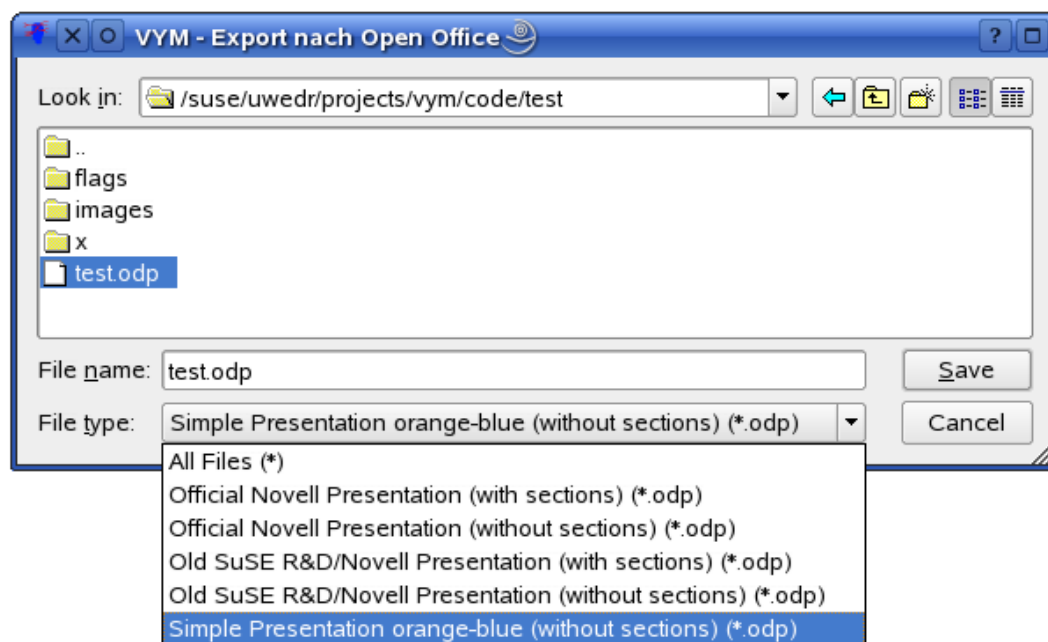
You can toggle this flag in the toolbar or by pressing [H]. Note that there is a global option in the settings menu (??) to toggle the use of this flag. By default the flag is enabled.

Open Office

Open Office beginning with version 2 uses the so called "Open Document Format", which can be written by VYM . The options are currently limited, but it possible to export presentations which can be opened in Open Office Impress. By selecting

- File → Export → Open Office

you get a file dialogue where you can choose the output file and the file type:



The file types represent various templates, which can be created with some manual work from an existing Open Office document. The structure of VYM map is then inserted into a template. There are some limitations at the moment:

- VYM can't take care of page lengths, so you have to check and probably reedit in Open Office to avoid text running over the end of a page
- Images and flags are not used at the moment
- Notes are just written as plain text, without RichText
- The full range of templates are not available in all distributions.

Some of the templates make use of *sections* i.e sections insert the headings of mainbranches as chapters for sections into the presentation.

Image

VYM supports all image formats which are natively supported by the QT toolkit: BMP, JPEG, PBM, PGM, PNG, PPN, XPM, and XBM. For use in websites and for sending images by email PNG is a good recommendation regarding quality and size of the image. VYM uses QTs default options for compressing the images.

ASCII

Exporting an image as text is somewhat experimental at the moment. Later this will probably be done using stylesheets. So the output may change in future versions of VYM .

L^AT_EX

VYM can generate an input file for L^AT_EX. Currently this is considered as experimental, there are no options (yet). By selecting

- File → Export → L^AT_EX

you will be asked in a file dialog for the name of the output file. This file may then be included in a L^AT_EX document using command:

```
\include{inputfile.tex}
```

KDE Bookmarks

VYM will overwrite the KDE bookmarks file and then try to notify running Konquerors via DCOP of the changed file. VYM does not create a backup!

- File → Export → KDE Bookmarks

XHTML (Webpages)

This is the format to use if you wish to create a webpage. To see an example visit the VYM homepage: www.InSilmaril.de/vym

Some explanation on how this works: Before a map is exported as XHTML, it will be first written as XML into a directory (see 5.2). Then the external program `xsltproc`⁷ will be called to process the XML file and generate HTML code. A dialog allows the user to set various options:

- **Include image:** If set, VYM will create an image map at the top of the HTML output. Clicking on a branch in the map will jump to the corresponding section in the output.
- **Colored headings:** If set to yes, VYM will colour the headings in the text part with the same colours used in the VYM map.
- **Show Warnings:** If set to yes, VYM will ask before overwriting data.
- **Show output:** This is useful mainly for debugging. It will show how the processing of the XML file works by calling the external `xsltproc`.

Additionally the paths to the CSS and XSL stylesheets can be set. By default on SUSE Linux they will be in `/usr/share/vym/styles`.

XML

The map is written into a directory both as an image and as an XML file. The directory is set in a file dialog. If the directory is not empty, you will be warned and offered choices if you are at risk of overwriting existing contents.

It is possible to export different maps into the same directory. Each file generated will have the map's name as prefix, e.g. `todo.vym` becomes `todo.xml`, `todo.png`, `todo-image-1.png` and so on. This is useful if, for example, a website comprises several combined maps that have to be stored in the same directory.

Export a part of a map

Select a branch you want to export together with its children, then open the context menu and choose *Save Selection*. This will create a file with the suffix `.vyp`, which is an abbreviation for 'vym part'.

6 Advanced Editing

6.1 Properties of an object

For any branch you can open a satellite window (see 2.1): the *property window*.

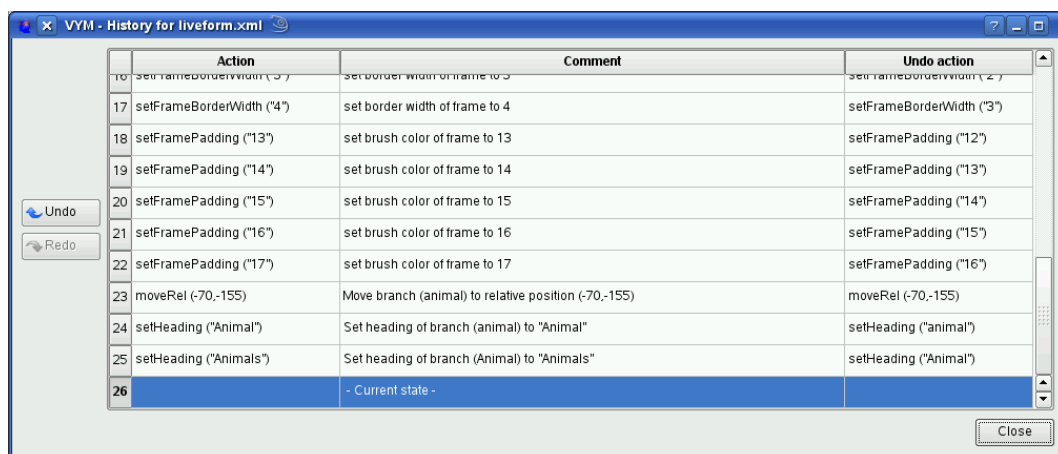
⁷On SUSE Linux and some other distributions `xsltproc` is installed by default.



- Frame
- Link (see ??)
- Layout (see 6.5)

6.2 Changing the history: Undo and Redo

VYM keeps track of all changes done in a map. The default number of changes which can be undone is 75. The complete history can be seen in the *historywindow*:



A single step back be undone or redone with [CTRL-Z] or [CTRL-Y], or by using the buttons in the toolbar or the *historywindow*. Inside the *historywindow*, you can click on a line to unwind all actions done until that point in time – or redo all changes by clicking on the last line.

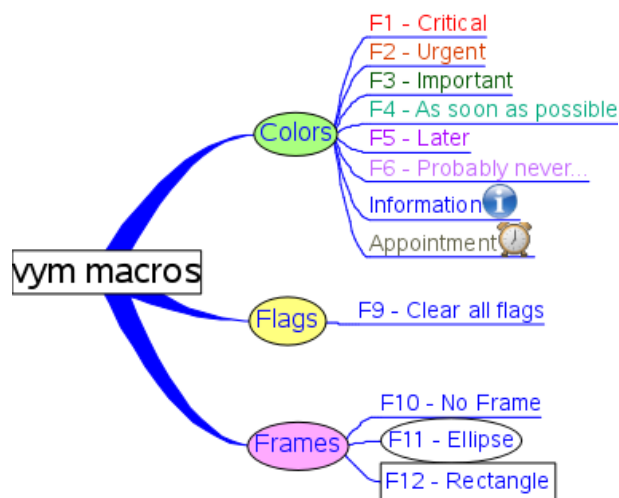
Hint: You can "paste from the past": Go back in time by e.g. with [CTRL-Z], then copy to clipboard by pressing [CTRL-C]. Now do all actions again, e.g. by [CTRL-Y] or clicking on the last action in *historywindow*. Now paste from the past with [CTRL-V].

!

6.3 Macros

Macros have been added to VYM in version 1.9.0. So far they have a preliminary character, maybe they are going to be replaced by full-featured scripting functionality later (though the commands will be more or less the same).

Each function key [F1] to [F12] holds a macro, which is executed on the current selection if the key is pressed. The default macros change the colour of a subtree or set the frame of a branch:



Each macro is a VYM script, which is executed when the associated key is pressed. The default location of the scripts can be changed in the Settings menu. More information on using scripts in VYM is found in [??) appendix B.

6.4 Bookmarks

Open new tabs instead of new windows

If you use konqueror as your browser, VYM will remember the konqueror session which was opened first by VYM . You can also press [Ctrl] and click to open the link in a new tab.

VYM can also open a new tab in Mozilla or Firefox using the remote command⁸ of these browsers.

Drag and Drop

If you want to keep bookmarks in a map, select a branch where you want to add the bookmark, then simply drag the URL from your browser to the map. Also you could use an existing heading as URL: Right click onto the branch and select "Use heading for URL".

Directly access bookmark lists of a browser

Please see the sections 5.1 and 5.2 about Import and Export filters.

⁸<http://www.mozilla.org/unix/remote.html>

Special URLs

VYM can turn an existing heading of a branch into an URL. Currently this works for Bugentries in the Novell Bugtracking system: Open the context menu of a branch (usually by right-clicking it) and select

- Create URL to Bugzilla

The URL will be build from the number in the heading.

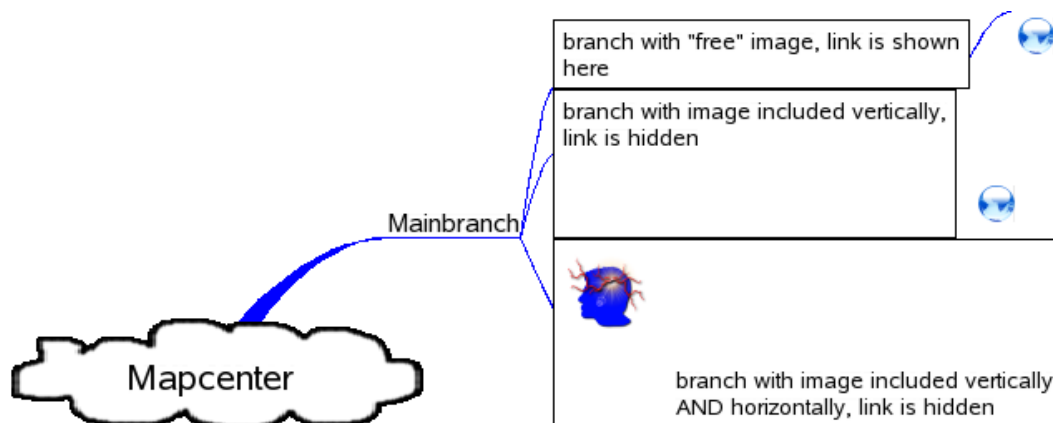
6.5 Associating images with a branch

The default setting for an image is for it to float "freely". Images can be positioned anywhere on the canvas, but may end up in the same place as other parts of the map obscuring that part of the map.

The solution is to insert or include them "into" a branch. This can be done via the property window (see 6.1):

- Include images horizontally
- Include images vertically

The image is still positioned relative to its parent branch, but the heading and border of the branch frame adapt to the floating image, see below:



6.6 Modifier Modes

Modifiers are for example the [Shift]- the [Ctrl]- or the [Alt]-keys. When pressed while applying mouse actions, they will cause VYM to use a "modified" version of the action which usually would be done.

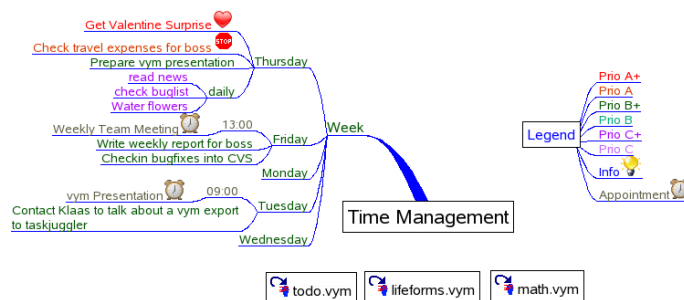
Without a modifier key pressed, the first mouse click on a branch just selects it. For the behaviour of the [Ctrl] modifier there are several options, which can be set from the modifier toolbar:



The default mode is to copy the colour from the clicked branch to the already selected branch. The figure above shows the toolbar with the default modifier selected. The second modifier let's you easily copy a whole branch with a single click. The third modifier lets you create links between branches called *xLinks*. They will be explained in the next section 6.8.

6.7 Hide links of unselected objects

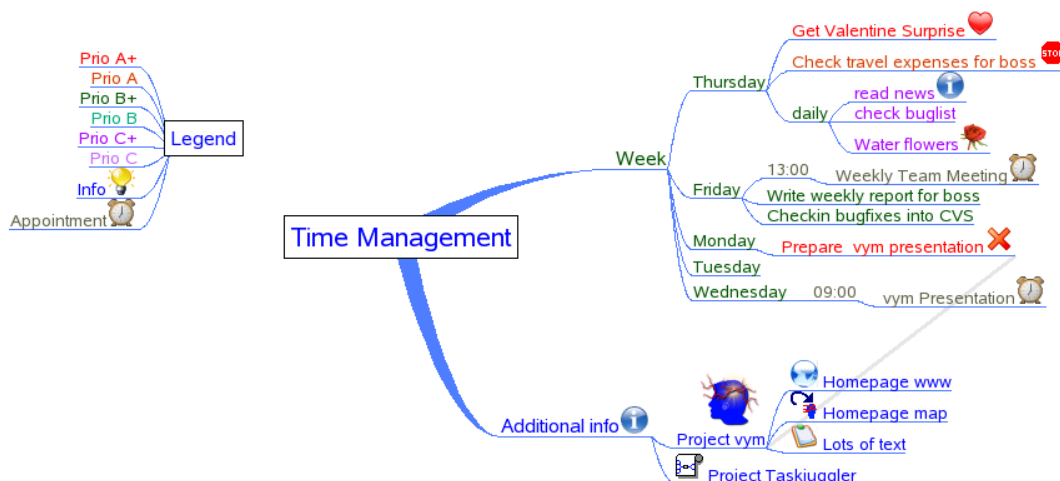
Sometimes it would be useful to position a branch freely, just like a mainbranch or an image. This is possible for all branches, you can use a mainbranch and hide its connecting link to the mapcenter or hide the link between a child branch and its parent. This can be used e.g. for legends or a collection of vymLinks pointing to other maps:



To hide the link between a branch and its parent open the 6.1 and check "Hide link if object is not selected" on "Link" tab.

6.8 XLinks

So far all the data in the VYM map has been treelike. Using xLinks you can link one branch to any other, just like attaching a rope between two branches in a real tree. This is especially useful in complex maps, where you want to have crossreferences which can not be displayed on the same visible area of the *mapeditor* window. The following example map still fits on one screen, but shows how data can be crosslinked. In the graphics there is a link from a task (prepare a presentation) to general information:



Note that a xLink which points to a branch that is not visible (because it is scrolled), is just shown as a little horizontal arrow. In the screenshot above have a look at the 'Tuesday' branch.

Create a xLink

Choose the link mode from the modifier toolbar (by clicking the toolbar icon or pressing [L]). Select the branch, where the xLink should start. Press the modifier key [Ctrl] and then click on the selected branch where the link should start and drag the mouse pointer to the branch where the link is to end. (The link is drawn to follow the mouse pointer). When you release the mouse over a branch the xLink becomes permanent.

Modify or delete a xLink

First select a branch at either end of the xLink. Then open the context menu and select 'Edit xLink'. A submenu contains all the xLinks of the branch (if there are any). They are named like the branches, where they end. Choose one and the xLink dialogue opens, where you can set colour, width and also delete the xLink.

Follow a xLink

In a complex VYM map it sometimes comes in handy to be able to jump to the other end of a xLink. You can do this by opening the context menu of the branch and clicking on 'Goto xLink' and selecting the xLink you want to follow.

6.9 Adding and removing branches

The context menu of a branch shows some more ways to add and delete data e.g. you can delete a branch while keeping its children. The children become linked to the parent of the previously removed branch. Similar branches can be inserted into existing maps. For keyboard shortcuts also have a look at the context menu.

6.10 Adding a whole map or a part of a map

Select a branch where you want to add a previously saved map (.vym) or a part of a map (.vyp), then open the context menu and choose *Add* → *Add Map (Insert)*. For the import you can choose between *Add Map (Insert)* and *Add Map (Replace)*: The imported data will be added after the selected branch.

7 VYM on Mac OS X

7.1 Overview

Basically there are two ways to run VYM on Macs:

Qt Mac Edition:

VYM here provides the well known Mac look and feel. VYM is available as Mac OS X application package contained in a disk image (vym.dmg). It has been compiled and tested in Mac OS 10.4. This package includes runtime libraries of Qt by Trolltech.

X11 version

VYM can also be run using the Linux version, but then menus and handling will also be those of the Linux version e.g. The menu bar will look different.

7.2 Contextmenu and special keys

Most Macs unfortunately just have a single mouse button. In order to show the context menu which usually would be opened with the right mouse button, you can click while pressing the [kommand]-key.

Especially on Laptops some of the keys usually used on PC keyboards seem to be missing. The QT-Mac Edition of VYM has its own keyboard shortcuts. To find the shortcuts just have a look at all the menu entries, the shortcut is visible next to an entry. Toolbar buttons also may have shortcuts, just position the mouse pointer over a button and wait for the little help window to appear.

7.3 Viewing external links

VYM on Mac uses the system call `/usr/bin/open` to view links. Mac OS determines automatically if the link is a pdf or www page and opens the right browser.

A VYM initialisation process and configuration

A.1 Settings menu

The *Settings* menu allows to configure VYM to your needs:

Set application to open PDF files

Choose a PDF viewer like `acrobat` or `konqueror` which is installed on your system.

Set application to open external links

Choose your favourite webbrowser here.

Set path for macros

Set the default search path for macros, which will be executed when you press one of the function keys. Each key corresponds to a file (`macro-1.vys`..`macro12.vys`) in the search path.

Set number of undo levels

Sets the number of undo/redo levels. The default setting is 75 levels.

Autosave and autosave time

Automatic saving of modified maps can be toggled on or off. The autosave time is entered in seconds.

Write backup on save

When saving a map called `example.vym`, VYM will rename the existing file to `example.vym~` before writing the `example.vym` itself.

Edit branch after adding it

If set, the heading of a new branch will be edited immediatly after adding the branch.

Select branch after adding it

If set, a new branch will be selected immediatly after adding it. When you "brainstorm" on a given keyword, you don't want to go deeper and deeper into details, but keep the focus on the keyword. So the default setting here is to *not* select the freshly added branch.

Select existing heading

If set and you begin to edit the heading of a branch, the heading text in the dialog will be selected. Usefully to copy&paste to other applications.

Delete key

If set, the [Delete] is enabled to, well, delete objects. This can be switched off to avoid confusing with the nearby [Insert]-key on PC keyboards.

Exclusive flags

If set, some of the standard flags can only be used exclusively, e.g. the smileys.

Use hide flags

If set, every branch which also has the hide flag set (see [5.2](#)) will be hidden in exports.

A.2 Configuration file

On startup VYM will look for a configuration for user specific settings like window positions, toolbars etc. If this file does not already exist, it will be created. The file is located in the users home directory. The exact position depends on the platform:

Platform	Configuration file
Linux	<code>~/.config/InSilmaril/vym.conf</code>
Mac OS X	<code>/Users/NAME/Library/Preferences/com.insilmaril.vym.plist</code>

The file can be edited manually, or on Mac OS X with Property List Editor (installed with xtools).

A.3 Path to ressources

VYM will try to find its ressources (images, stylesheets, filters, etc.) in the following places:

1. Path given by the environment variable `VYMHOM`.
2. If called with the local option (see [A.4](#) below), VYM will look for its data in the current directory.
3. `/usr/share/vym`
4. `/usr/local/share/vym`

A.4 Command line options

VYM has the following options:

Option	Comment	Argument	Description
v	version		Show version and codename of VYM
l	local		Use local paths to stylesheets, translations, icons, etc. instead of system paths. Useful for testing
h	help		Show help
r	run	filename	Load and run script
q	quit		Quit immediatly after startup. Useful for benchmarks.

You can also give several filenames at the commandline to let VYM open several maps at once.

B Scripts

TODO: This section of the VYM manual is not complete yet, sorry.

B.1 Example scripts

B.1.1 Export a set of maps

```
# Simple vym script to export images of various maps simultaneously
exportImage ();
```

The script above can be used to export all maps in a directory automatically. If the script is named `export-image.vys`, call VYM with

```
$ vym --quit --run export-image.vys *.vym
```

C Contributing to VYM

So far I'd say I have written 98% of the code on my own. No surprise, that VYM exactly fits my own needs. Nevertheless I would like to encourage all users of VYM to contribute. Maybe not only with feature requests, but also with code, new import/export filters, translations etc. In this appendix I'll try to show how easy it is to expand the things you can do already with VYM . I really look forward to hear from you!

C.1 Getting help

Frequently asked questions

Please refer to the FAQ available on the VYM website:

<http://www.InSilmaril.de/vym/faq.html>

Mailinglists

There are two mailinglists: `vym-forum` is the VYM users forum to discuss various questions, while `vym-devel` is intended for people interested in contributing to VYM . You can view the archives and subscribe at

https://sourceforge.net/mail/?group_id=127802

Contacting the author

Especially for support questions please try the mailinglists first. If everything else fails you can contact the author Uwe Drechsel at

vym@InSilmaril.de

C.2 How to report bugs

Though Sourceforge has its own bugreporting system, I'd rather prefer if you contact me directly (see C.1) or even better: You can file a bugreport in Bugzilla, the bugtracking system of openSUSE:

http://en.opensuse.org/Submit_a_bug

I build VYM regularly for openSUSE, so you may report it against a recent version there, even if you use another Operating System. Please don't forget to tell me what you are using:

- the exact steps needed to reproduce the bug
- the version and build date of VYM (see the Help → About VYM)
- hardware and Operating System

C.3 Compiling from the sources

C.3.1 Getting the sources

You find the latest version of VYM at the project site:

<https://sourceforge.net/projects/vym/>

There you can check them out of the source repository (CVS):

```
cvs -d:pserver:anonymous@cvs.sf.net:/cvsroot/vym checkout code
```


C.3.2 The Qt toolkit

Qt is C++ toolkit for multiplatform GUI and application development. It provides single-source portability across MS Windows, Mac OS X, Linux and all major commercial Unix variants. Qt is also available for embedded devices. Qt is a Trolltech product. For more information see

www.trolltech.com/qt

C.3.3 Compiling VYM

Make sure you have installed your Qt environment properly, see the Qt documentation for details. You need to have the Qt command `qmake` in your PATH-environment, then run

```
$ qmake
$ make
$ make install
```

The last command `make install` needs root-permissions. Of course it may be omitted, if you just want to test VYM .

C.4 VYM file format

VYM maps usually have the suffix `".vym"` and represent a compressed archive of data. If you want to have a closer look into the data structure map called `"mapname.vym"`, just uncompress the map manually using

```
$ unzip mapname.vym
```

This will create directories named `images` and `flags` in your current directory and also the map itself, usually named `mapname.xml`. The XML structure of VYM is pretty self explaining, just have a look at `mapname.xml`.

This XML file can be loaded directly into VYM , it does not have to be compressed. If you want to compress all the data yourself, use

```
$ zip -r mapname.vym .
```

to compress all data in your current directory.

C.5 New features

There are lots of features which might find their way into VYM . Together with VYM you should have received a directory with several example maps. You find them by clicking Help → Open vym example maps. There you will find the map `vym-projectplan.vym`. It lists quite a lot of things to be done in future. If you have more ideas, contact the development team at `vym-devel@lists.sourceforge.net`.

C.6 New languages support

In order to add a new language to VYM you need the sources (see C.3.1) and an installation of Trolltechs QT. A part of QT are the development tools, from those tools especially the translation tool "Linguist" is needed.

In some Linux distributions the development tools are in an extra package, e.g. on SUSE LINUX you should have installed:

```
libqt4-devel.rpm  
libqt4-devel-doc.rpm  
libqt4-devel-tools.rpm
```

If you don't have QT in your system, you can get it from <http://www.trolltech.com> Once you are able to compile vym yourself, you can translate the text in vym itself by performing the following steps:

- Let's assume now your encoding is "NEW" instead of for example "de" for german or "en" for english
- Copy the file `lang/vym.en.ts` to `lang/vym.NEW.ts` (The code itself contains the english version.)
- Add `lang/vym.NEW.ts` to the TRANSLATIONS section of `vym.pro`
- Run Linguist on `vym.NEW.ts` and do the translation
- Run `lrelease` to create `vym.NEW.qm`
- Do a make install to install the new vym and check your translation

If you feel brave, you can also translate the manual. It is written in LaTeX, you just have to change the file `tex/vym.tex`. (Linguist and QT are not needed, but it is useful to know how to work with LaTeX and esp. `pdflatex` to create the PDF.)

Please mail me every translation you have done. I can also give you a developer access to the project, if you want to provide translations regularly.

C.7 New export/import filters

VYM supports various kinds of filters. Data can be written directly, inserted into templates or it can be written as XML data and then processed by XSL transformations.

Most of the import/export functionality is available in the classes `ImportBase` and `ExportBase` and subclasses. All of them can be found in `imports.h` and `exports.h`.

Direct import/export

An example for a direct export is the XML export. This method touches the implementation of nearly every object of VYM, so whenever possible you should better use a XSL transformation instead.

If you still want to know how it is done, start looking at `MapEditor::saveToDir` in `mapeditor.cpp`.

Templates

Templates have been introduced to export to opendoc format used e.g. by Open Office. While I read the spec (> 500 pages) about the format⁹ I had the feeling that I did not want to write the export from scratch. It would be too complex to adapt the styles to your own wishes, e.g. the layout.

Instead I analyzed existing Open Office documents. I found out that there are lots of redundant bits of information in a standard presentation, for example each list item is contained in its own list. In the end I came up with the default presentation style, which still could be simplified, just in case you have free time. . .

The existing templates are still work in progress, before you spend too much time developing your own style, please contact me. Basically the following steps are needed to build your own style:

1. Create an example in Open Office. Use a title, authors name, page heading etc. which you can easily grep for in the output file.
2. Unzip the Open Office document into a directory.
3. The main file is called `content.xml`. All data is in one single line. You can split the XML tags using the script `scripts/niceXML`, which is part of the VYM distribution.
4. Copy the output of `niceXML` to `content-template.xml`.
5. Looking closer you will find lots of unused definitions, for example of styles. You can delete or simply ignore them.
6. Try to find your title, authors name. VYM will replace the following strings while exporting:

<code><!-- INSERT TITLE --></code>	title of map
<code><!-- INSERT AUTHOR--></code>	author
<code><!-- INSERT COMMENT --></code>	comment
<code><!-- INSERT PAGES--></code>	content of map

The content itself is generated in a similar way by inserting lists into `page-template`. Here the following substitutions are made:

<code><!-- INSERT PAGE HEADING--></code>	heading of a page (mainbranch or child of mainbranch, depending on the use of sections)
<code><!-- INSERT LIST --></code>	all children of the branch above

Currently images are exported and notes just will appear as text without formatting and colours.

XSL Transformation

VYM uses XSL transformations while exporting (e.g. XHTML) and importing data (e.g. KDE bookmarks). There is a little code needed to provide the GUI, the rest is done using the `.xsl` stylesheet and calling the `xsltproc` processor, which is part of libxslt, the XSLT C library for GNOME.

⁹ <http://www.oasis-open.org/>